



Follow us on Twitter @StAnnesLiv

St Anne's Monthly News

Friday 30th January 20256

Viernes 30 de Enero de 2026

PE & Swimming Days - Come to school in PE Kits

Monday	Tuesday	Thursday	Friday
PE Y4 Elm & Y3 Alder	Swimming Y1-5	PE Y1 Sycamore & Y2 Willow	PE Y5 & Y6

Diary Dates

Tuesday 10th February
9.00am Safer Internet Day
Parent information event (9am)

Wednesday 11th February
2.30pm Keppleway parents' meeting

Friday 13th February -
School Closed all Children
INSET Day: Teacher training.

Monday 16th -20th February
School Closed
Half Term Holiday

Monday 23rd February
School re-opens for all children

Wednesday 25th February
9.00am Early Writing workshop
(EYFS parents)

Wednesday 4th March
9.00am KS1 Writing parent
workshop

Thursday 5th March
World Book Day - Wear your
Pyjamas to school today

After-school club

Monday	Tuesday	Thursday
Modelling Y1-Y2	Construction Y1 & Y2	Chess Y3-Y6
Forest School Y2-Y5	Cosmic Yoga Y1 & Y2	Crafts & Textiles Y3-Y6
Choir Y3-Y6	Singing Y1 & Y2	
Girl's Football Y3-Y5	Dance Y3 & Y4	
Booster Y6	Dodgeball Y4 & Y5	
	Musical Theatre Y3-Y6	
	Art Y6	

WELCOME Parents

Our Parents' New Year Welcome Meeting took place earlier this month and was well attended. Parents shared ideas and discussed ways they could help to fundraise for school funds, supporting activities and opportunities for our children. All parents and carers are very welcome to join future meetings — we would love to see more faces and hear your ideas.

We still have Reception & Nursery places available

Please contact the school office on
0151 709 1698

Bikeability
Cycling Proficiency for the 21st century

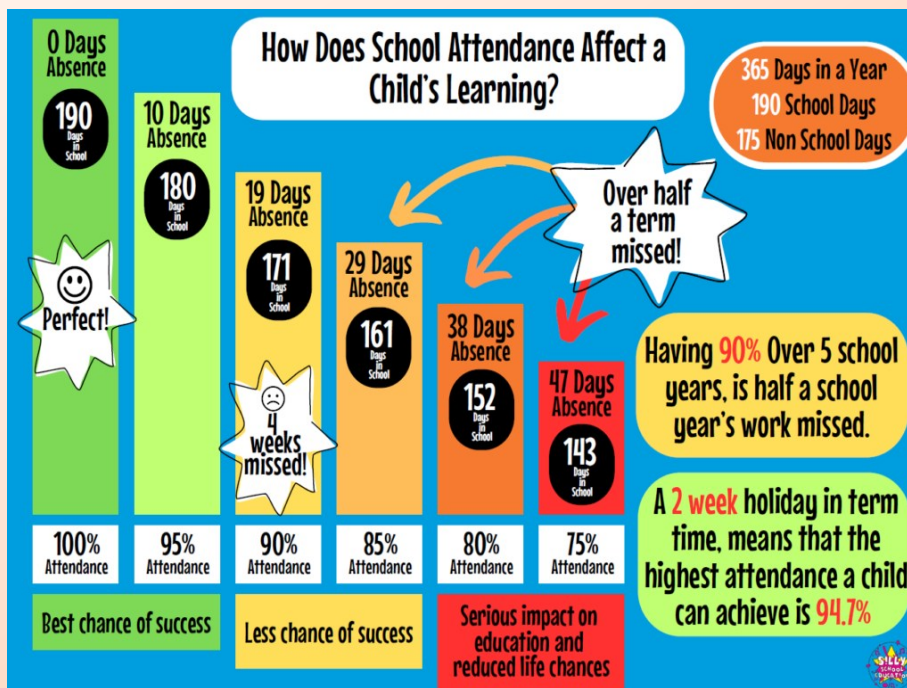
Last month the Y5 & 6 children took part in the Learn to Ride Bikeability Scheme with Bikeright.

They all received a certificate and can now safely ride a bike! Well done!



Whole School Attendance January = 94.4%%

Y5 Fir Class came top this month 96.5%.



Fir 96.64

Elm 95.99%

T3 Alder 95.18%

Y5 Hazel 95.03%

Y6 Oak 94.82%

Reception-Maple 94.72%

Y2 Willow 94.07%

Y1 Sycamore 91%

HOW TO CLEAN YOUR TEETH



Dental Health Workshop in School

The children in EYFS and KS1 have been learning about dental health this month and we held a parent /carer workshop for dental health delivered by the NHS and Picton Children's Centre. The workshop centred around dental health & hidden sugars in food and drinks. Toothbrushes and toothpaste were also given out as well as instructions on how to clean teeth.



January 2026

Acorns	Yussuf, Ayaan, Gabriel, George
Maple	Believe, Yazin, Able, Melike
Sycamore	Maria, Isabella, Areen, Muaz
Willow	Bradley, Rukayah, Bilal, Dawud
Alder	Adrian, Niya, Elliott, Chimereze
Elm	Ella, Anya, Sahara, Hezekiah
Fir	Hugo, Zain, Amaya, Tendai
Hazel	Maisie, Shahd, Esther, Hangwei
Oak	Zixian, Ja'vaeh, Ezra, Demier



This month in school the Liverpool ASD team also held a drop in face to face questions and answer session for parents/carers.

This provided the opportunity for parents/carers to talk in a school group setting and ask any questions they may have or discuss concerns about their child. This session was open to all parents /carers whether their child is awaiting an ASD assessment or already has an ASD diagnosis.

We hope to have more sessions like this throughout the year so if you missed it this time please come along to the next one.



Positive footprints

A group of our Y6 pupils went to a lunch meeting with representatives from Positive Footprints and housing associations to talk about careers, aspirations and the local community. They really enjoyed their treats of pancakes and milkshakes!



Catholic Life Every Day

community has grown in faith through prayer, liturgies, and acts of service that celebrated God's mercy, forgiveness, and love. Pupils have shown compassion, generosity, and respect in their daily lives, living out the Jubilee message in the classroom, on the playground, and beyond the school gates. These achievements remind us that the Jubilee was not just something we learned about, but something we truly lived.

Now, as the Jubilee Year draws to a close, we are challenged to carry everything we have achieved forward. The values we have practiced—kindness, reconciliation, and care for others—do not end with the Jubilee; they are part of who we are at St Anne's.

Our challenge is to continue walking this journey by making thoughtful choices, supporting one another, and being witnesses of God's love every day. In doing so, we honour all we have achieved together and continue to grow as a strong, faithful school community.

As we come to the end of the Jubilee Year at St Anne's Catholic Primary School, we take time to reflect on the journey we have shared together.

Throughout the year, our school

